



SINTEROM

ROMANIA



GENERAL PRESENTATION

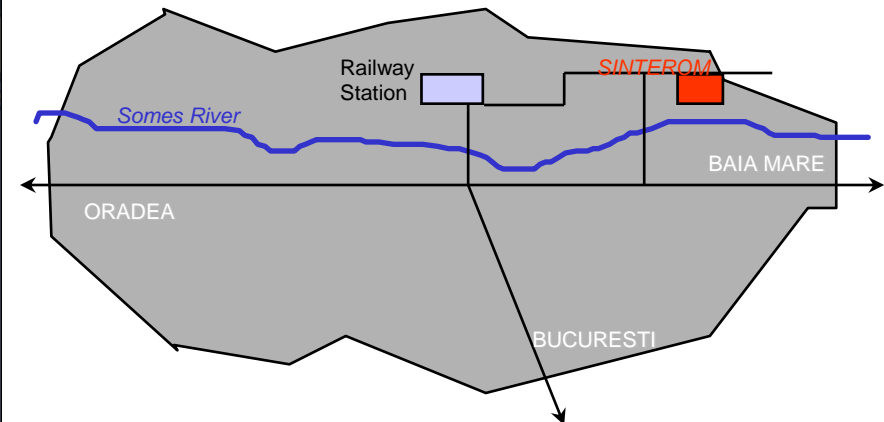
- SET UP 1936
- CAPITAL RON 12 Million
- EMPLOYEES 220 EMPLOYEES
- HEAD OFFICE/ PLANT SITE ROMANIA,
400641 CLUJ- NAPOCA, 12 MUNCII BLVD.
TEL. : 0040-264-415080, 415082, 415085, 415074
FAX : 0040-264-415076, 415093
E-MAIL : sinterom@sinterom.ro
- LEGAL STATUS PRIVATE : 62,7540% (Contactoare Buzau – SCR Group)
SIF OLTENIA : 31.0371%
Public : 6.2089%
Member of SCR Group
- LAND & BUILDING 75,524. sqm

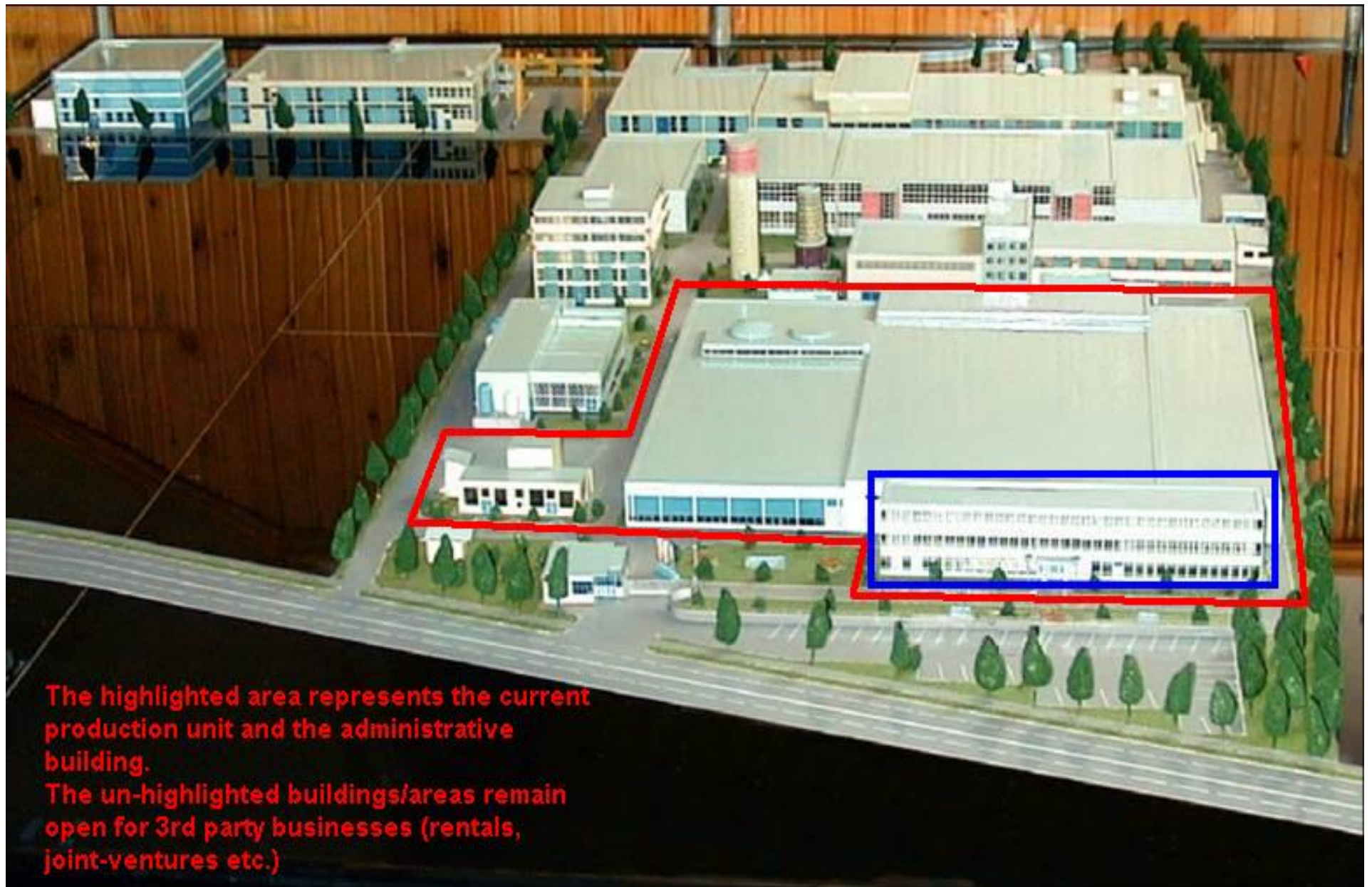
PLANT LOCATION

ROMANIA



CLUJ NAPOCA





The highlighted area represents the current production unit and the administrative building.

The un-highlighted buildings/areas remain open for 3rd party businesses (rentals, joint-ventures etc.)

BRIEF HISTORY

- 1936 - SET UP OF “UZINA TRIUMF”, SPECIALISED IN CHEMICAL PRODUCTS
- 1948 - STARTING THE MANUFACTURING OF MICA INSULATOR SPARK PLUGS
- 1955 - SERIAL PRODUCTION OF CERAMIC INSULATOR SPARK PLUGS
- 1959 - START THE PRODUCTION OF GLOW PLUGS
- 1970 - PRODUCTION OF SINTERED PARTS UNDER METAFRAM-FRANCE LICENCE
- 1972 - MANUFACTURING OF THERMOSTARTS, UNDER CAV -ENGLAND LICENCE
- 1974 - CHANGES THE NAME IN SINTEROM
- 1979 - STARTING OF AlNi AND AlNiCo CAST MAGNETS PRODUCTION
- 1980 - START OF THE PRODUCTION OF TUNGSTEN AND MOLYBDENUM WIRES UNDER TOHO-KINZOKU, JAPAN LICENCE.
- 1980 - MANUFACTURING OF ELECTRICAL CONTACTS FROM SILVER ALLOYS
- 1984 - NEW MODERN TOOL SHOP DEVELOPMENT
- 1987 - EXTENSION AND MODERNISATION OF SINTERED PART WORKSHOP

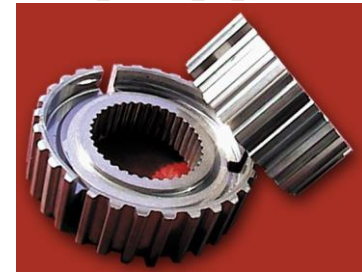
- 1991 - THE RANGE OF THERMOSTATS IS DIVERSIFIED
- 1992 - THE SUPERALUMINOUS SINTERED CERAMIC INSULATOR RANGE IS EXTENDED
- 1997 - STARTING OF THE FAST START GLOW PLUG MANUFACTURING
- PRODUCTION OF THE COPPER CORED ELECTRODE SPARK PLUGS
- 1999 - CERTIFIED ISO 9001 BY TUV MANAGEMENT SERVICE GMBH
- 2000 - PRIVATIZATION - 51% ACQUIRED BY **CONTACTOARE BUZAU**
- 2001 - **RECERTIFIED ISO 9001 BY TUV MANAGEMENT SERVICE GMBH**
- 2003 - PRODUCTION OF THE SPARK PLUGS WITH 16 mm HEXAGON AND FLAT SEAT
- PRODUCTION OF A NEW TYPE OF GLOW PLUGS
- 2004 - **CERTIFIED ISO 9001/2000 BY TUV MANAGEMENT SERVICE GMBH**
- **EAQF CERTIFICATION** with **DACIA –RENAULT**
- 2005 - **ISO TS 16949** CERTIFICATION (December) BY **SGS**
- 2007 - **RECERTIFIED ISO 9001**
- 2008 - **RECERTIFIED ISO TS 16949;**
- **CERTIFICATION ISO 14001**
- 2010 - **RECERTIFIED ISO 9001** (October) BY **SGS**
- 2011 - **RECERTIFIED ISO 14001** (November) BY **SGS;**
- **RECERTIFIED ISO TS 16949** (December) BY **SGS**



MANUFACTURING PROGRAM

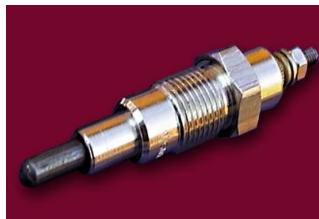
- **SINTERED PARTS MAINLY FOR AUTOMOTIVE INDUSTRY
& OTHER RANGES**

pinion for timing chain, toothed wheels for toothed belt, oil pump pinions, shock absorber components, lock parts, various selflubricating bronze bushes and bearings



- **DEVICES FOR ENGINE STARTING AND IGNITION**

spark plugs, glow plugs, ignition electrodes, thermostarts for cold starting of Diesel engines

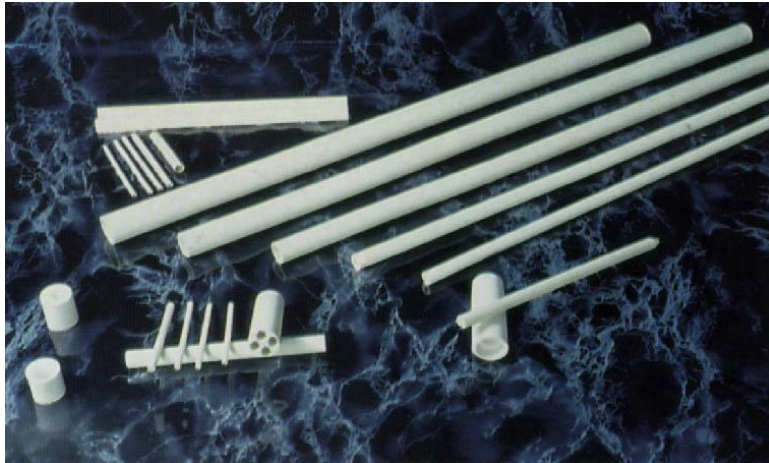




SINIEROM

- **ALUMINOUS SINTERED CERAMIC PARTS**

Tubes, bushes, ceramic insulators, welding ceramic nozzles, ceramic parts for mills



MAIN CAPACITIES

- SINTERED PRODUCTS - 1150 TONS/YEAR
- SPARK AND GLOW PLUGS - 2.2 MIL PCS/YEAR
- CERAMIC SUPERALUMINOUS PARTS - 140 TONS/YEAR

ANNUAL SALES

YEAR	SALES/YEAR (USD)	SALES/EMPLOYEE (USD)
2000	5,000,000	8,710
2001	5,100,000	9,300
2002	5,500,000	9,800
2003	6,190,000	12,000
2004	7,400,000	15,600
2005	7,500,000	18,000
2006	8,000,000	20,000
2007	8,000,000	21,000
2008	8,100,000	22,000
2009	5,100,000	22,500
2010	5,800,000	25,200
2011	6,000,000	27,300
2012	4,759,065	21,830

SALES BY PRODUCT TYPES

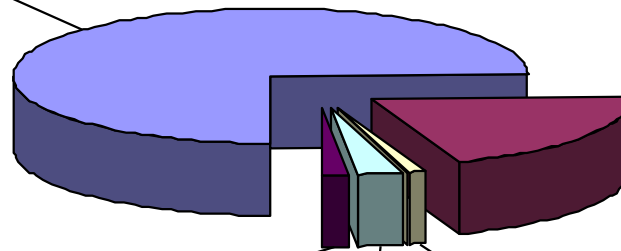
**Sintered
products
ferrous and
nonferrous,
74.20%**

**Ceramic plugs
and auto
accessories,
20.10%**

**Electrical
contacts , 1.80%**

**Tooling and
mechanical
parts procesed,
2.60%**

**Aluminous
sintered ceramic
products, 1.10%**



MAIN CUSTOMERS

- | | |
|----------------------------|-------------------------|
| • DELPHI DIESEL SYSTEM | SPAIN |
| • GRUP RENAULT | ROMANIA, TURKEI, BRAZIL |
| • BOSCH POWER TOOL | HUNGARY |
| • WELLES (GNUTTI CARLO) | USA |
| • AUTONOVA | ROMANIA |
| • PIERBURG PUMP TECHNOLOGY | ITALY |
| • DANFOSS TRATA | SLOVENIA |
| • MAKITA EU | ROMANIA |

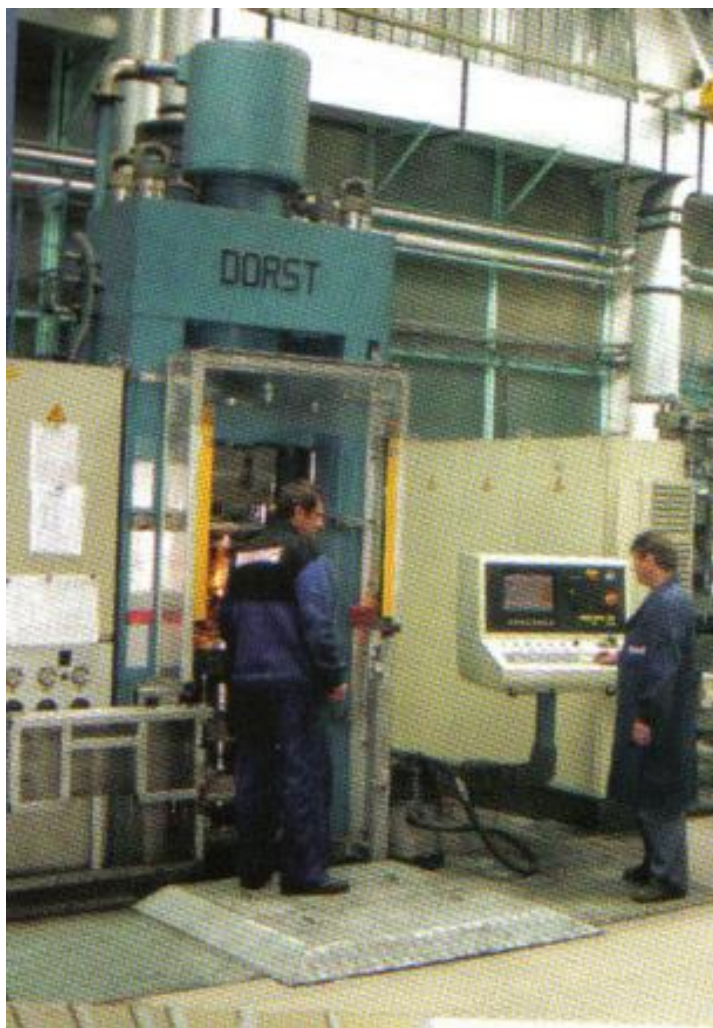
EXPORT COUNTRIES

- **HUNGARY**
 - **U.S.A.**
 - **BELGIUM**
 - **GERMANY**
 - **FRANCE**
 - **SPAIN**
 - **ITALY**
 - **NETHERLANDS**
 - **SLOVENIA**
-
- **Export in 2008: 27% from sales**
 - **Export in 2009: 37% from sales**
 - **Export in 2010: 45% from sales**
 - **Export in 2011: 54% from sales**
 - **Export in 2012: 57% from sales**

MAIN EQUIPMENT

- **A. METALLIC SINTERED WORKSHOP**

- Hydraulic multilevel press for powder metallurgy, for high complexity sintered parts 250 to
- Automatic mechanical presses for compacting sintered parts (range 20 to-250 to)
- Mechanical sizing presses for sintered parts (range 20 to-200 to)
- Powder metallurgy hydraulic presses- 2 pcs- 500 to
- Sintering furnace, conveyor belt type with protection endo-gas in muffle
- Endothermic gas generator by earth gas cracking
- Rotating magnetic table, semiautomatic plane grinding machine
- Deburring, washing, drying equipments Walther Trowal type
- High- Frequency Hardening equipment
- Heat treatment furnace IPSEN type
- Heat treatment line with IPSEN type furnace



Heat treatment line



- **B. SPARK PLUGS & VEHICLE ACCESSORIES WORKSHOP**

- Automatic machine for cold extrusion spark plug shells
- Multispindle automatic lathe, magazine fed,
- Multispindle automatic lathe, bar fed, six spindles,
- Mono-spindle automatic lathe,
- Semi-automatic thread rolling machine
- Stamping presses
- Automatic welding machine earth electrode on the spark plug shell,
- Semi-automatic spark plug shell marking machine
- Extrusion steel coil phosphating line
- Chemical blackening line
- Stationary bath zincplating line
- Stationary bath nickelplating line
- Rotating drum zincplating line
- Thermostart assembling line

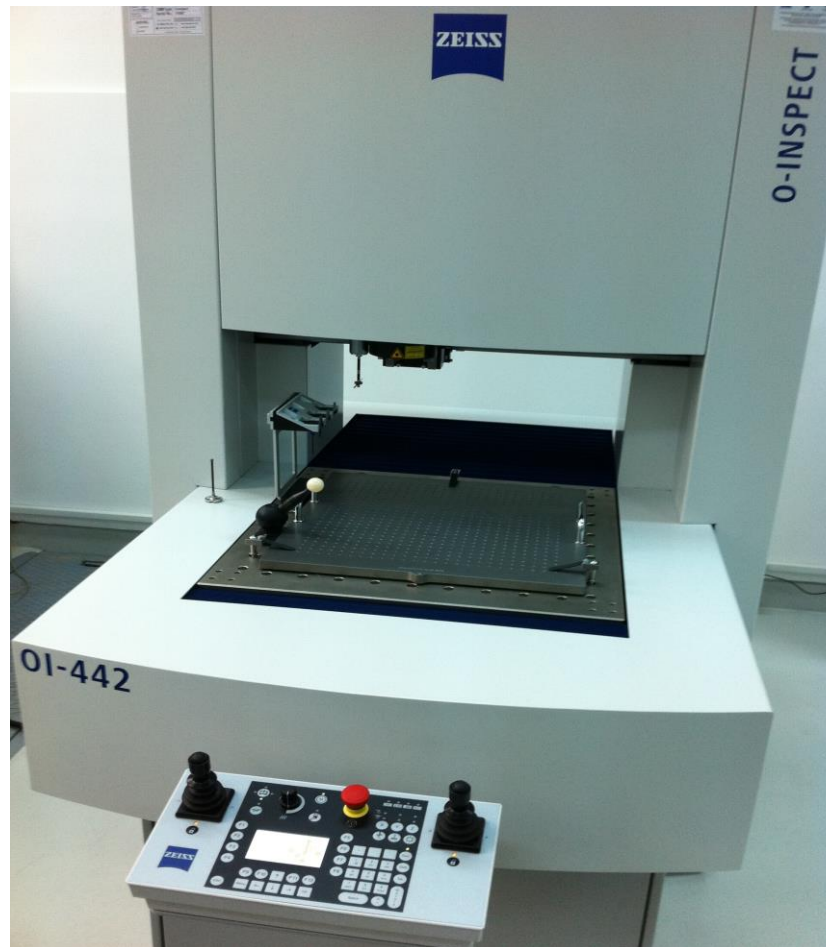
- **C. CERAMIC PARTS WORKSHOP**

- Alumina powder preparing atomizer
- Ceramic spark plugs insulator isostatic pressing and profile grinding machine
- Spark plug ceramic insulator isostatic press
- Semi- automatic tunnel furnace for superaluminous ceramic parts firing
- Semi- automatic tunnel furnace ceramic insulator glaze firing
- Semi- automatic spark plug insulator glazing machine
- Automatic cold extrusion spark plugs central electrode type machine
- Semi- automatic ceramic insulator and central electrode assembling line

INVESTMENT PROGRAM 2013-2014
for modernization of technological flow in manufacturing of sintered metal parts

- | | |
|-------------------------------------------------------------------------------------------------------------------------------------|------------------------|
| 1. Hydraulic press DORST TPA 250 3HP
Acquisition contract No. 53/17.07.2013 between SINTEROM - DORST | 1. 320.000 Euro |
|
 | |
| 2. Sintering conveyor belt type
Acquisition contract No.51/15.07.2013 between SINTEROM -MAHLER | |
| 2A. MAHLER DLM6E 450/100/800-4500 | 331.300 Euro |
| 2B. MAHLER DLM6E 450/100/800-5250 | 395.300 Euro |
|
 | |
| 3. Carbonitriding instalation 300 kg/charge
Acquisition contract No.55/19.07.2013 between SINTEROM - UTTIS | 150.000 Euro |
|
 | |
| 4. Measuring machine 3D - ZEISS O INSPECT 442
Acquisition contract No.59/23.07.2013 between SINTEROM - ZEISS | 91.500 Euro |
|
 | |
| 5. Lathe CNC for precision machining TOPPER type TNL-85 2S
Acquisition contract No.118/04.10.2013 between SINTEROM - CMIE | 72.400 Euro |
|
 | |
| 6. Deburing-washing-drying machine ROSLER
Acquisition contract No.88/06.09.2013 between SINTEROM- ROSLER | 39.000 Euro |

3-D Measuring machine: ZEISS O INSPECT 442



250 to multiplaten compacting DORST PRESS



Conveyor belt sintering furnace



CNC Precision Lathe- TOPPER

Trust & Technology

ISO 9001 ISO 14001 CE
A Worldwide Tradition of Quality Products and Customer Service

Tongtai

CNC Lathe
TNL-85AII/100AII
TNL-100ALII/120ALII/130AII

High ■Quality ■Precision ■Efficiency ■Economy



Tongtai Machine & Tool Co.,Ltd.

Washing, deburring, drying equipment



Carbonitriding furnace 300 kg/charge

